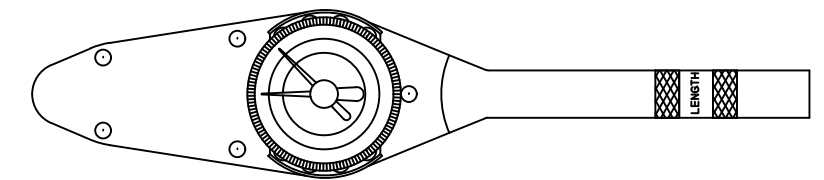
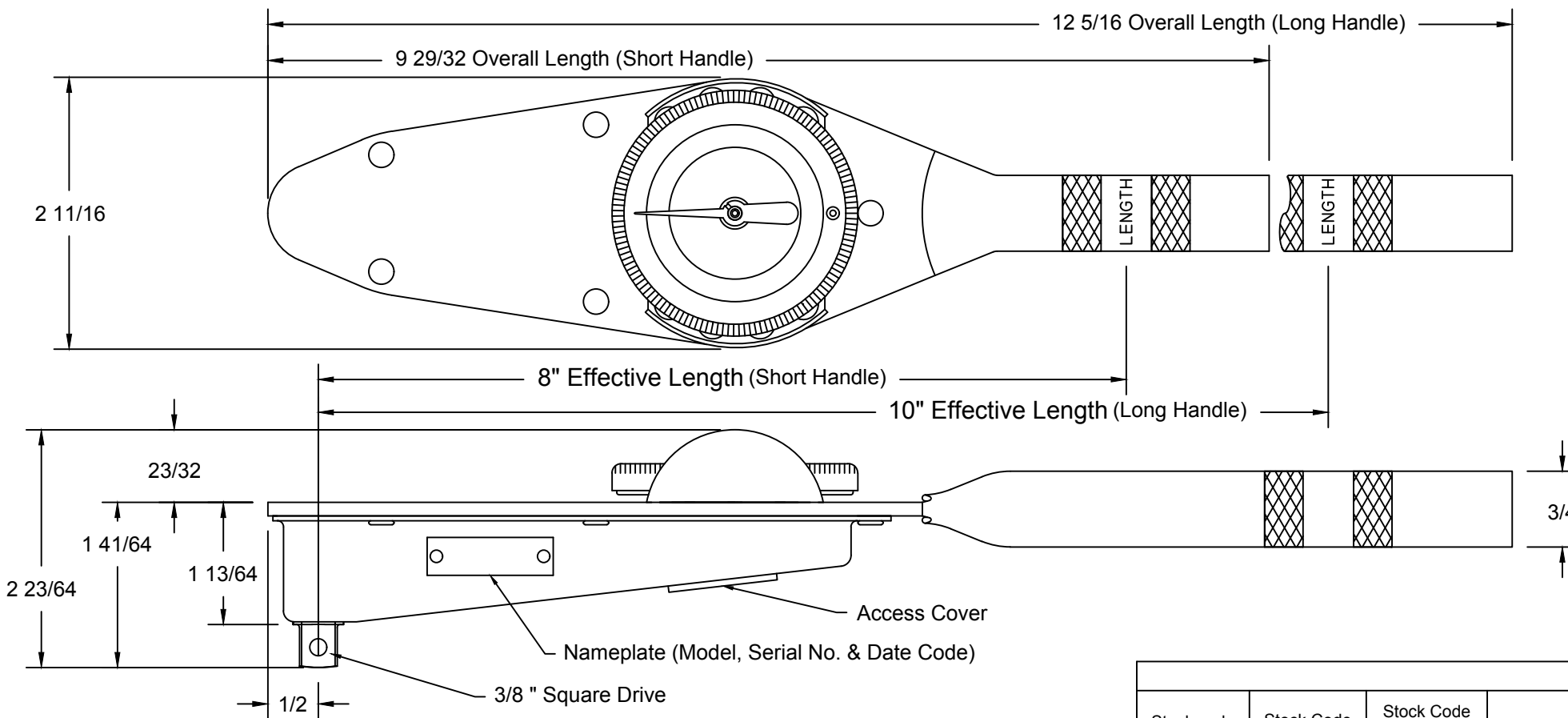
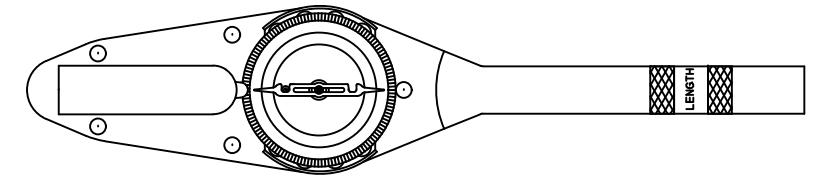
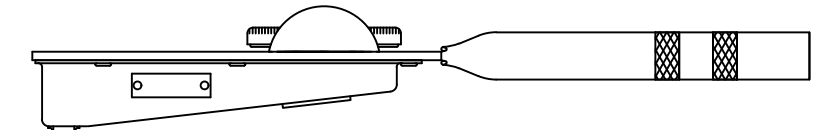


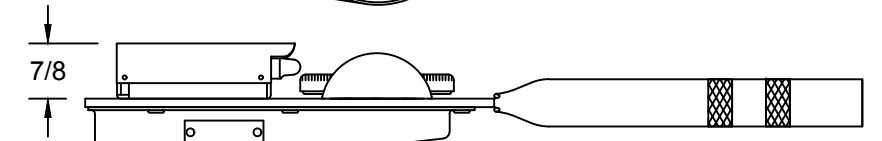
IMPORTANT NOTICE: ALL DIMENSIONS REFLECT ACTUAL GEOMETRY SIZE. DIMENSIONS MAY BE CARRIED OUT MORE DECIMAL PLACES THAN SHOWN PREVIOUSLY.



MEMORY POINTER SERIES (Long Handle Shown)



LIGHTED POINTER SERIES (Long Handle Shown)



Single Scale										
Stock code 2%	Stock Code 2% Lighted	Stock Code 2% Memory Pointer	Stock Code 1%	Stock Code 1% Lighted	Stock Code 1% Memory Pointer	Minimum Calibrated Reading	Maximum Calibrated Reading	Units	Dial Increment	Long Handle
D2F12F	D2F12FL	D2F12FM	D2F12FP	D2F12FLP	D2F12FMP	2.5	12	lb.ft.	0.5 lb.ft.	
D2F20N	D2F20NL	D2F20NM	D2F20NP	D2F20NLP	D2F20NMP	4	20	Nm	0.5 Nm	
D2F25F	D2F25FL	D2F25FM	D2F25FP	D2F25FLP	D2F25FMP	5	25	lb.ft.	0.5 lb.ft.	
D2F30N	D2F30NL	D2F30NM	D2F30NP	D2F30NLP	D2F30NMP	6	30	Nm	1 Nm	
D2F50F	D2F50FL	D2F50FM	D2F50FP	D2F50FLP	D2F50FMP	10	50	lb.ft.	1 lb.ft.	X
D2F50N	D2F50NL	D2F50NM	D2F50NP	D2F50NLP	D2F50NMP	10	50	Nm	1 Nm	X
D2F60N	D2F60NL	D2F60NM	D2F60NP	D2F60NLP	D2F60NMP	12	60	Nm	2 Nm	X
D2F70N	D2F70NL	D2F70NM	D2F70NP	D2F70NLP	D2F70NMP	14	70	Nm	2 Nm	X
D2F75N	D2F75NL	D2F75NM	D2F75NP	D2F75NLP	D2F75NMP	15	75	Nm	1 Nm	X
D2F100H	D2F100HL	D2F100HM	D2F100HP	D2F100HLP	D2F100HMP	20	100	lb.in.	1 lb.in.	
D2F150H(B)	D2F150HL	D2F150HM	D2F150HP	D2F150HLP	D2F150HMP	30	150	lb.in.	2.5 lb.in.	
D2F200H	D2F200HL	D2F200HM	D2F200HP	D2F200HLP	D2F200HMP	40	200	lb.in.	5 lb.in.	
D2F300H	D2F300HL	D2F300HM	D2F300HP	D2F300HLP	D2F300HMP	60	300	lb.in.	5 lb.in.	
D2F400H	D2F400HL	D2F400HM	D2F400HP	D2F400HLP	D2F400HMP	80	400	lb.in.	5 lb.in.	X
D2F600H	D2F600HL	D2F600HM	D2F600HP	D2F600HLP	D2F600HMP	120	600	lb.in.	10 lb.in.	X

(B) available in "Black Oxide" finish. Add "C" to end of "Stock Code" for calibration readings.

SPECIFICATIONS

All 2% and 1% models meet stated accuracy of reading from 20% of full scale to full scale. (Note: There are some exceptions to minimum and maximum calibrated readings on combo dials due to scale conversion and graduation line increments.)

Weight: Torque Wrench 1.2 lbs (2.1 lbs w/plastic storage case), (with light signal option add 0.2 lbs).

Light Signal Option Only
Replacement Bulb: 37TQP
Replacement Battery: 235TQP (AAA)

GGG-W-686C, ANSI B107.14M

Combo Dial											
Stock code 2%	Stock Code 2% Lighted	Stock Code 2% Memory Pointer	Stock Code 1%	Stock Code 1% Lighted	Stock Code 1% Memory Pointer	Minimum Calibrated Reading	Maximum Calibrated Reading	Units	Dial Increment	Scale Used For Calibration	Long Handle
D2F25CFK	D2F25CFKL	D2F25CFKM	D2F25CFKP	D2F25CFKLP	D2F25CFKMP	5	25	lb.ft.	1 lb.ft.		
						70	350	kg.cm.	10 kg.cm.	X	
D2F25CFN	D2F25CFNL	D2F25CFNM	D2F25CFNP	D2F25CFNLP	D2F25CFNMP	5	25	lb.ft.	1 lb.ft.		
						6	32	Nm	0.5 Nm	X	
D2F50CFK	D2F50CFKL	D2F50CFKM	D2F50CFKP	D2F50CFKLP	D2F50CFKMP	10	50	lb.ft.	2 lb.ft.		X
						140	700	kg.cm.	20 lb.ft.	X	
D2F50CFN	D2F50CFNL	D2F50CFNM	D2F50CFNP	D2F50CFNLP	D2F50CFNMP	10	50	lb.ft.	1 lb.ft.		X
						14	70	Nm	1 Nm	X	
D2F150CHK	D2F150CHKL	D2F150CHKM	D2F150CHKP	D2F150CHKLP	D2F150CHKMP	30	150	lb.in.	5 lb.in.		
						35	175	kg.cm.	5 kg.cm.	X	
D2F150CHN	D2F150CHNL	D2F150CHNM	D2F150CHNP	D2F150CHNLP	D2F150CHNMP	30	150	lb.in.	5 lb.in.		
						3.5	17	Nm	0.5 Nm	X	
D2F200CHK	D2F200CHKL	D2F200CHKM	D2F200CHKP	D2F200CHKLP	D2F200CHKMP	40	200	lb.in.	10 lb.in.		
						45	225	kg.cm.	5 kg.cm.	X	
D2F300CHK	D2F300CHKL	D2F300CHKM	D2F300CHKP	D2F300CHKLP	D2F300CHKMP	60	300	lb.in.	5 lb.in.		
						70	350	kg.cm.	10 kg.cm.	X	
D2F300CHN	D2F300CHNL	D2F300CHNM	D2F300CHNP	D2F300CHNLP	D2F300CHNMP	60	300	lb.in.	5 lb.in.		
						6.5	32	Nm	0.5 Nm	X	
D2F600CHF	D2F600CHFL	D2F600CHFMP	D2F600CHFP	D2F600CHFLP	D2F600CHFMP	120	600	lb.in.	10 lb.in.	X	X
						10	50	lb.ft.	1 lb.ft.		
D2F600CHK	D2F600CHKL	D2F600CHKM	D2F600CHKP	D2F600CHKLP	D2F600CHKMP	120	600	lb.in.	20 lb.in.		X
						140	700	kg.cm.	20 kg.cm.	X	
D2F600CHN	D2F600CHNL	D2F600CHNM	D2F600CHNP	D2F600CHNLP	D2F600CHNMP	120	600	lb.in.	20 lb.in.		X
						12	60	kg.cm.	1 Nm	X	



1846 Miner Street
P.O. Box 1306
Des Plaines, IL 60017
Phone: 847-824-4194
Fax: 847-824-7629
www.torqwrench.com

THE DATA, DRAWINGS, AND INFORMATION CONTAINED ON THIS DOCUMENT IS CONFIDENTIAL AND THE SOLE PROPERTY OF PRECISION INSTRUMENTS AND MAY NOT BE REPRODUCED, USED, OR DISCLOSED WITHOUT PRIOR WRITTEN PERMISSION OF AN OFFICER OF PRECISION INSTRUMENTS.

Scale 1x
By L. Cook
Date 3/20/20

Customer Print

DESCRIPTION
D1 (3/8" SQ.DR.) DIAL TYPE
TORQUE WRENCH

PART NUMBER
D2F SERIES