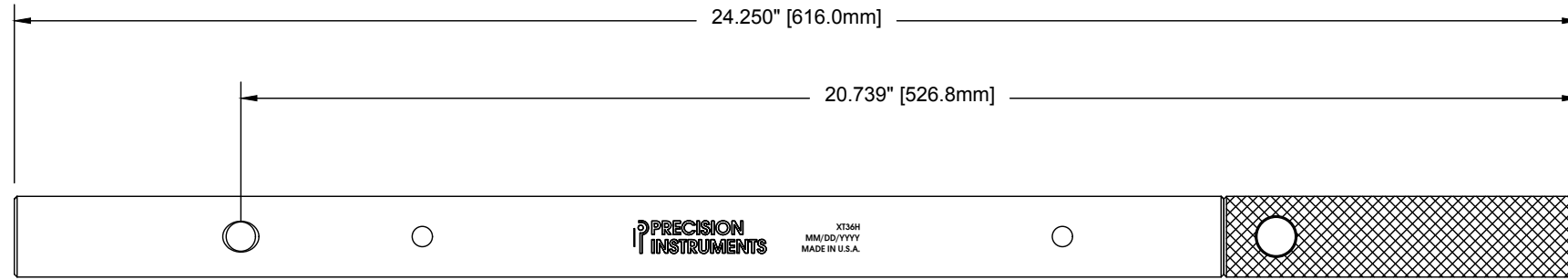
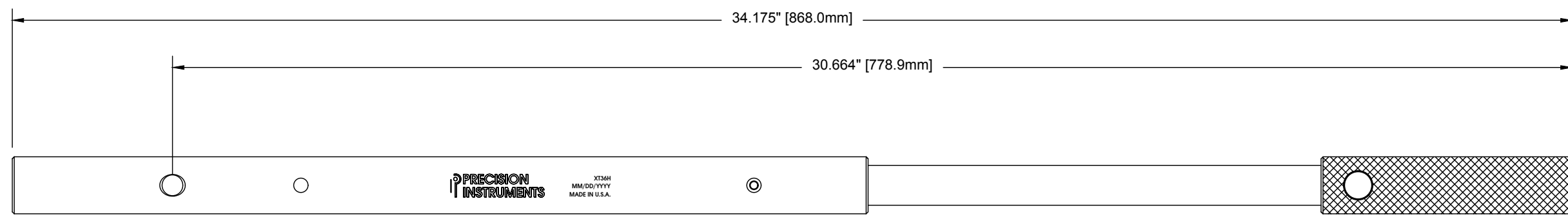
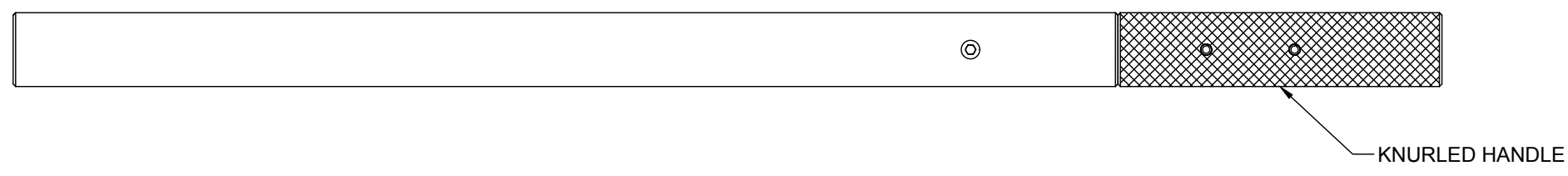
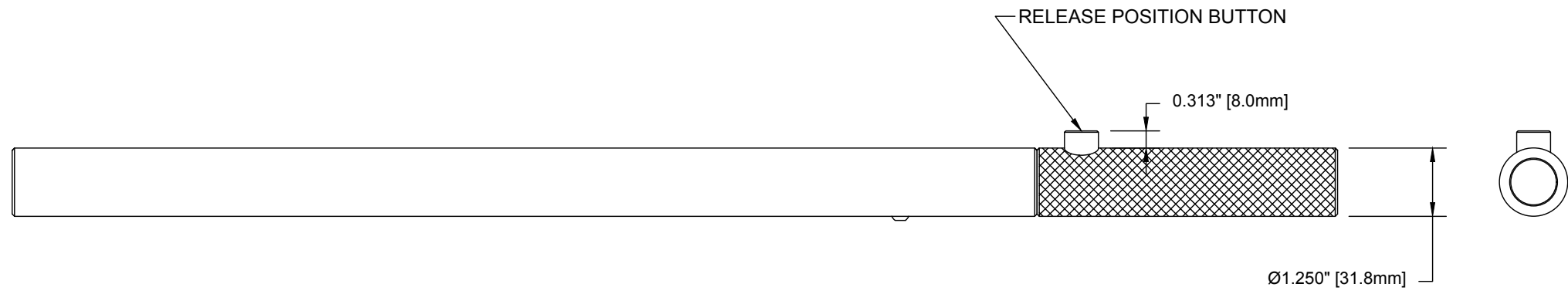
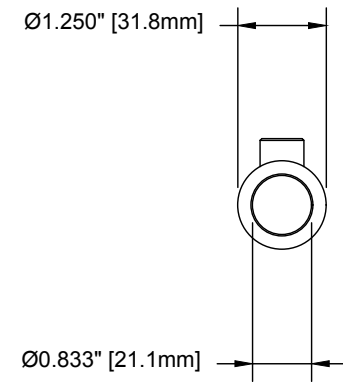


IMPORTANT NOTICE- ALL DIMENSIONS REFLECT ACTUAL GEOMETRY SIZE. DIMENSIONS MAY BE CARRIED OUT MORE DECIMAL PLACES THAN SHOWN PREVIOUSLY.



- NOTES:
1. TO BE USED WITH THE C4D600F OR C5D600F SERIES.
 2. WEIGHT: 7.00 LBS
 3. SHIPPING WEIGHT: 7.85 LBS



	1846 Miner Street P.O. Box 1306 Des Plaines, IL 60017 Phone: 847-824-4194 Fax: 847-824-7629 www.torqwrench.com	THE DATA, DRAWINGS, AND INFORMATION CONTAINED ON THIS DOCUMENT IS CONFIDENTIAL AND THE SOLE PROPERTY OF PRECISION INSTRUMENTS AND MAY NOT BE REPRODUCED, USED, OR DISCLOSED WITHOUT PRIOR WRITTEN PERMISSION OF AN OFFICER OF PRECISION INSTRUMENTS.		Scale -	Customer Print	
		By L. Cook Date 10/6/21	DESCRIPTION ADJUSTABLE EXTENSION BAR	PART NUMBER XT36H -		